

A photograph showing a large stack of precast concrete pipes. The pipes are arranged in several rows, with the top row being the most prominent. The pipes have a light grey, textured surface and a circular opening at the end. The background is a bright blue sky with scattered white clouds. The image is framed by a brown vertical bar on the left and a diagonal line separating the sky from the white background above.

Precast Concrete Socket Joint Pipes

G-Cast Overview

G-Cast produces a comprehensive range of precast reinforced concrete pipes with spigot & socket joint to meet the market demand and requirements. Pipes are manufactured to Malaysian Standard M.S. 881:Part 1, by spinning process.

Special Pipes

- Special pipes can be designed and manufactured to suit individual project requirements
- Pipes can be manufactured using PFA cement (MASCRETE / EKOCRETE), OPC or Sulphate Resistance Portland Cement / SRPC
- Pipes Internal Lining : High alumina cement / HAC lining, HDPE lining, PVC lining, SACRIFICIAL lining, EPOXY coating
- Pipes External Lining : SACRIFICIAL lining, EPOXY coating

JOINT TYPE

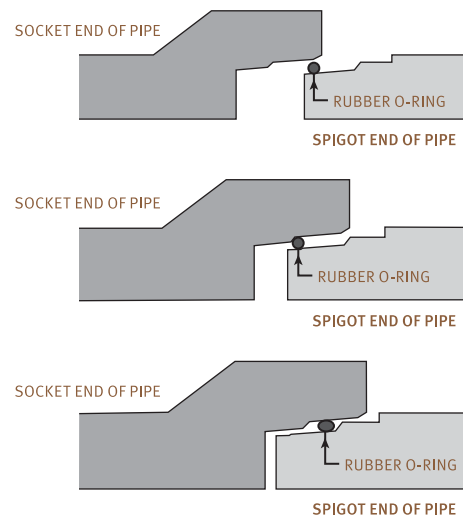
G-Cast spigot & socket joint pipe culverts come with sliding rubber O-Ring are designed and manufactured as flexible joint pipes.

APPLICATIONS

Used for sewage or storm water conveyance. The joints are designed to provide resistance to infiltration of ground water and/or backfill material, and resistance to exfiltration of sewage or storm water.

Flexible joint pipes are also used when settlement of laid pipes are expected such as pipes laid with high backfill, pipes laid in newly filled land or whereby pipes laid over compressible underlying ground.

PIPE JOINTING



Crushing Test Loads

(KiloNewtons per metre of effective length)

Nominal Size of Pipe (mm)	Class L		Class M		Class H	
	Works Proof Load	Max. Load	Works Proof Load	Max. Load	Works Proof Load	Max. Load
150	20	25	23	29	36	45
225	20	25	23	29	36	45
300	20	25	23	29	36	45
375	20	25	31	39	36	45
450	20	25	35	44	41	52
525	20	25	38	48	46	58
600	20	25	46	58	54	68
675	20	25	50	63	60	75
750	38	48	53	67	65	81
825	41	52	58	72	69	86
900	46	58	67	84	85	106
975	48	60	72	90	91	114
1050	51	64	76	95	96	120
1125	53	67	82	103	106	133
1200	58	72	87	109	110	138
1350	63	79	96	120	122	153
1500	69	87	104	130	132	165
1650	75	94	116	145	146	183
1800	82	103	124	155	158	198
1950	88	110	135	169	169	212

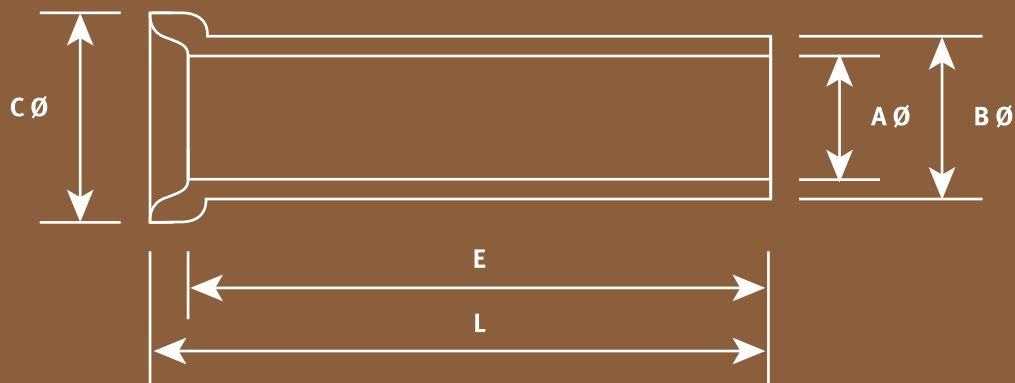
Product Specification

Diameter Range

300 - 1,800mm

Strength Class

S, X, Y, Z, Z-PLUS(1.5Z, 2Z, ETC) ; L, M, H, H-PLUS(1.5H, 2H, ETC)



Nominal Diameter		E	L	A Ø	B Ø	C Ø	Approx. Weight Per Pipe					
							Effective Length (mm)	Overall Length (mm)	Barrel Internal Diameter (mm)	Barrel External Diameter (mm)	Socket External Diameter (mm)	S (tonne)
(mm)	(in)											
300	12	3,050	3,120	300	370	440	0.28	0.28	0.28	0.28		
375	15	3,060	3,138	375	445	535	0.38	0.38	0.38	0.38		
450	18	3,060	3,138	450	530	628	0.51	0.51	0.52	0.52		
525	21	3,060	3,138	525	615	706	0.67	0.67	0.68	0.68		
600	24	3,060	3,155	600	700	805	0.86	0.86	0.87	0.87		
675	27	3,065	3,155	675	775	880	0.96	0.97	0.98	0.98		
750	30	3,065	3,155	750	860	995	1.17	1.18	1.19	1.20		
825	33	3,065	3,168	825	945	1,091	1.41	1.42	1.43	1.45		
900	36	3,065	3,190	900	1,030	1,151	1.68	1.69	1.71	1.73		
975	39	3,048	3,190	975	1,115	1,254	1.96	1.98	2.00	2.02		
1,050	42	3,048	3,180	1,050	1,200	1,342	2.27	2.28	2.31	2.33		
1,125	45	3,048	3,180	1,125	1,285	1,444	2.59	2.62	2.64	2.67		
1,200	48	3,040	3,180	1,200	1,370	1,501	2.95	2.98	3.00	3.03		
1,350	54	3,040	3,180	1,350	1,540	1,694	3.71	3.74	3.78	3.81		
1,500	60	3,040	3,180	1,500	1,710	1,854	4.65	4.67	4.70	4.74		
1,650	66	3,040	3,180	1,650	1,880	2,060	5.64	5.66	5.69	5.75		
1,800	72	3,030	3,180	1,800	2,050	2,260	6.70	6.73	6.79	6.85		



G-CAST CONCRETE SDN BHD

A-1-3A, Pusat Perdagangan Kuchai
No. 2, Jalan 1/127, Off Jalan Kuchai Lama
58200 Kuala Lumpur, Malaysia

T : +603 7983 8068

F : +603 7983 6080

www.g-cast.com.my